

Safety in Traffic Training

Pedestrian Cyclist

Chen Xu

09.11.2016

Contents of this Training

In traffic the pedestrian and cyclist are special member.

General traffic signs.

Punishment & fines.

Safety Notice.

In traffic the pedestrian and cyclist are special members.

Pedestrians and cyclists play an important role in traffic, but they are not safe compared with other traffic participants, for example cars, trucks, trains, and so on.

It means, the pedestrian and cyclist must be very careful in traffic.

In traffic the pedestrian and cyclist are special members.

Basic rules § 1 Road-traffic-regulations Straßenverkehrs-Ordnung(StVO)

- Front-view
- Back-view
- Damage
- Risking
- Obstruction

General traffic signs.

3 kinds of traffic signs:

1. Danger signs
2. Mandatory Signs
3. Prohibition Signs

General traffic signs.

1. Danger signs

Triangles

Top up

White base

Red edge



2. Mandatory Signs

Round
Blue base



3. Prohibition Signs

Round
White base
Red rand



General traffic signs.

Danger signs



General traffic signs.

Mandatory signs



General traffic signs.

Mandatory signs



General traffic signs.

Prohibition Signs



General traffic signs.

Mandatory Signs- Right-of-way

Right of way is a regulation that determines the order in which a road user is allowed to continue his journey before another.

For example

Going straight before turning (normally)
Right before Left
And so on.

General traffic signs.

Mandatory signs- Right-of-way signs



General traffic signs.

Right-of-way signs- Right before Left (RvL)

Right before Left

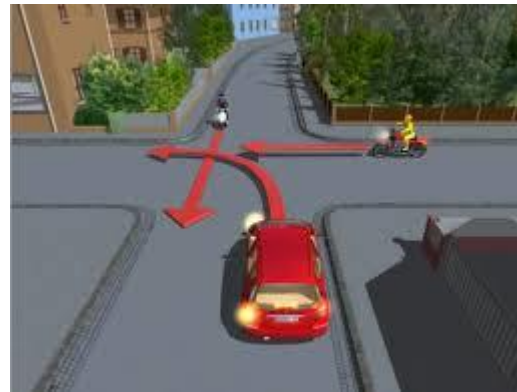
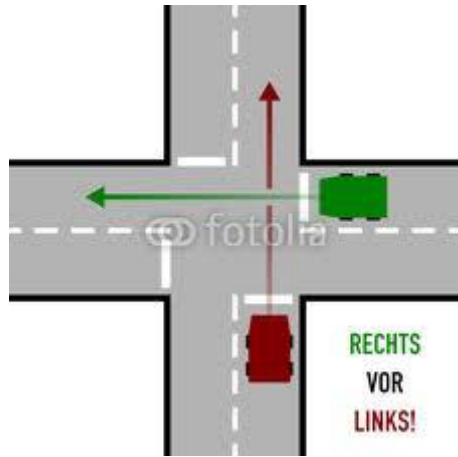
Rechts vor Links

To handle the traffic at crossings and junctions from each way, this rules will be applied.

In most countries with right-hand traffic, the basic rule is right before left. The one who comes from the right side has the right-of-way, the other **MUST** wait.



General traffic signs. Right before Left



General traffic signs.

Right-of-way

1. RvL
2. Traffic signs
3. Light signs(Traffic light)
4. Police officers

If someone violates existing traffic rules,
they must take consequences.

1. Warning
2. Fine imposed
3. Crime

1. Warning

Warning will be issued at low misdemeanors.

For example

False parking.

Fine of warning will be 5- 35€

2. Fine imposed

Fines will be levied if a road user has committed a major offense.

For example

Ignoring a red traffic light.

Fine will be over 35€ and Points in Flensburg.

3. Crime

Crimes are the most serious breaches of traffic laws.

Flensburg und Pointsystem

The point system is a set of rules in traffic, for the one who violate the traffic regulations, will be sanctioned.

The points will be recorded in Flensburg.

Examples

Ignoring Right-of-way/traffic light	1P + 80€
Dangerous overtaking	1P + 70€
Danger for pedestrian	1P + 70€
Creation of traffic danger	1P + 70€
Obstruction of emergency vehicles	2P + 65€

Punishment & fines.

Example especially for cyclists

Not ride on the marked bicycle road or ride in the one-way road with wrong direction

20-35€

Auf Fußgänger Gehweg bzw. Fußgängergebiet fahren.

15€

Example especially for cyclists

Riding without indication light in the dark.
20€

Overspeed of the max. Speed 30km/h.
15-35€

Safety notice.



Safety notice.



Safety notice.



Safety notice.



Indication light

Helmet +
Safety vest



Thank you for your
Attention !!

FH Aachen
Freshman Institute
CHEN XU
Pater-Briers-Weg 85
52511 Geilenkirchen
T +49. 241. 6009 xxxxx
F +49. 241. 6009 xxxxx

www.freshman-institute
www.fh-aachen.de